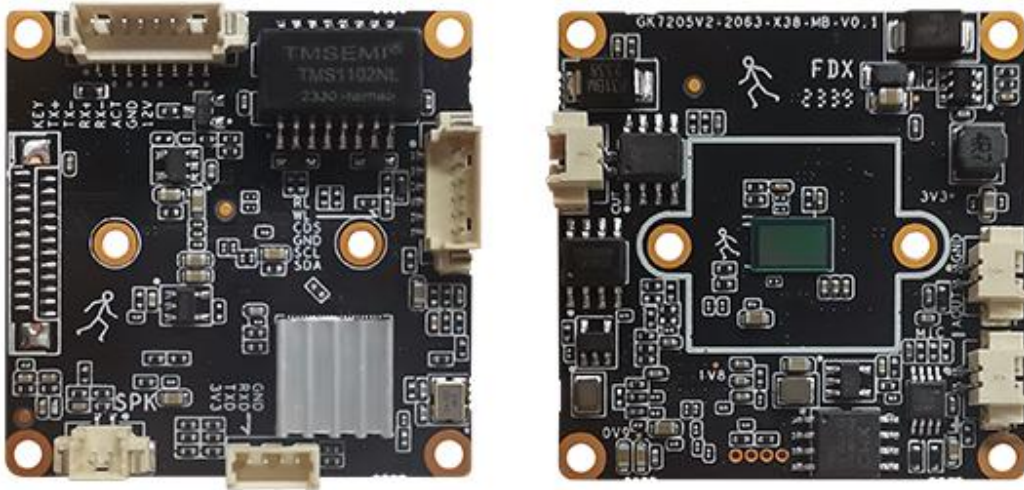


CKANPLUS Product Datasheet

Model name: *CAF-300R-DC*



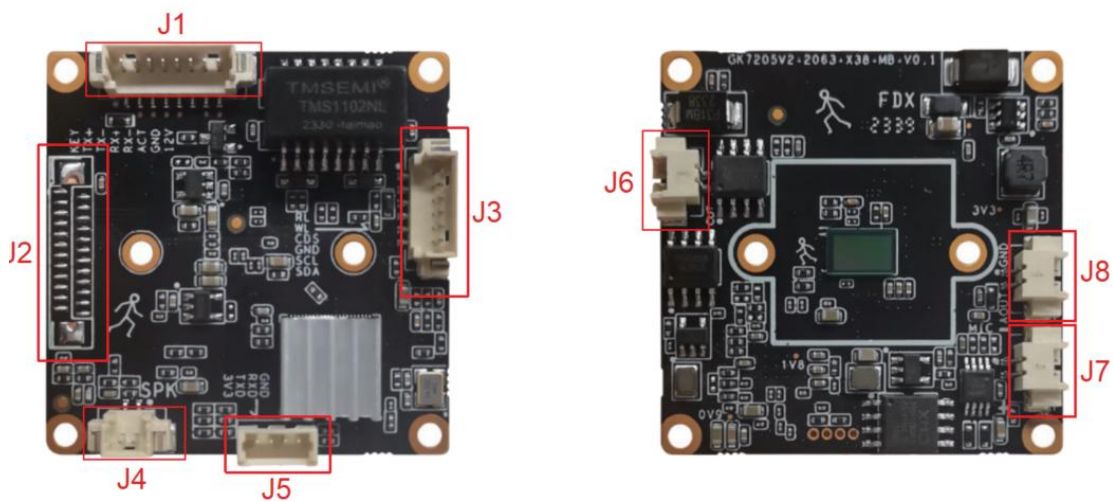
Key Specifications:

Category	Item	Specification
System	System Processor	ARM Cortex A7 @ 600MHz
	Image Sensor (Option)	1/2.9" CMOS
Image	Streams	Dual stream
	Main Stream Frame Rate & Resolution	20fps: 2304*1296 (default), 2304*1296, 1920*1080
	Sub Stream Frame Rate & Resolution	20fps: 720*576, 720*480, 704*576 (default), 640*360, 640*480, 512*288, 352*288
	Effective Pixels	3 Megapixels
	Video Compression Standard	H.265 (default)/H.264
	Main Stream:	Main stream: 128–4096Kbps; Default: 2380Kbps
	Sub Stream:	Sub stream: 68–1024Kbps; Default: 682Kbps
	Wide Dynamic Range	Digital WDR
	Sync Mode	Internal synchronization
Signal-to-Noise Ratio	49dB	

	Minimum Illumination	0Lux (Fill light on)
Supplementary Light	Light Adjustment	Adaptive brightness adjustment
	Light Modes	Infrared, Warm light, Smart dual-light (default), Light off
Image Processing	Image Style	Standard, Soft, Transparent
	Day/Night Mode Switching	Auto switch, Timed switch, Day mode, Night mode
	Image Adjustment	Supports contrast, brightness, saturation, sharpness adjustment
	Exposure Settings	Automatic
	Image Enhancement	Digital 3D noise reduction, Defog
Audio	Audio Stream	Enabled by default; supports disable
	Encoding Format	G711A (default)/G711U
Network	Concurrent Streams	Client supports up to 16 streams
	Browser Support	IE8+, Chrome18+, Firefox5.0+, Safari5.02+; Supports English and Chinese
	API Protocols	Standard ONVIF, GB28181, Public Cloud
	Network Protocols	Standard HTTP, TCP/IP, ICMP, RTSP, RTP, UDP, RTCP, SMTP, DHCP, DNS
	Connection Method	Wired
Interfaces	Audio	1 built-in MIC, 1 built-in speaker
	Network	1 RJ45 10M/100M adaptive Ethernet port
	Storage	SD card not supported
Intelligence	Smart Events	Supports motion detection, region intrusion, tripwire detection, defocus detection, video tampering
General	User Management	Up to 12 users, 3-level permissions: Admin, Normal user, Visitor
	General Functions	Time config, OSD config, Privacy masking, Log management, Tamper alarm, Defocus detection
	Alarm Linkage	Email alert, Client alarm, Mobile

		app push
	Factory Reset	Browser reset, App reset
	Operating Temperature/Humidity	-20°C to +60°C; 10% to 90%
	Power Supply	DC12V
	Board Size	38*38 mm

Pin Definition



Label	Silkscreen No.	Pin No.	Pin Definition	Function
RJ45 Interface	J1	1	KEY	Functional Key / Reset
		2	TNTX+	Network Transmit +
		3	TNTX-	Network Transmit -
		4	TNRX+	Network Receive +
		5	TNRX-	Network Receive -
		6	LED_ACT	Network Activity Indicator LED
		7	GND	Ground
		8	12VIN	12V Power Input
Expansion Slot	J2	/	24PIN 0.5mm FPC	24-Pin FPC Expansion Connector
LED Board	J3	1	RL	IR LED Control
		2	WL	White Light Control
		3	CDS	Photosensitive Sensor

				(Hardware)
		4	GND	Ground
		5	SCL	I2C Serial Clock
		6	SDA	I2C Serial Data
Speaker	J4	1	SPK-	Speaker Negative
		2	SPK+	Speaker Positive
Debug Port	J5	1	GND	Ground
		2	RXD	UART Receive
		3	TXD	UART Transmit
		4	3.3V	3.3V Power Output
IR-CUT	J6	1	CUT+	IR-CUT Drive Positive
		2	CUT-	IR-CUT Drive Negative
Microphone	J7	1	GND	Ground
		2	MIC IN	Microphone Input