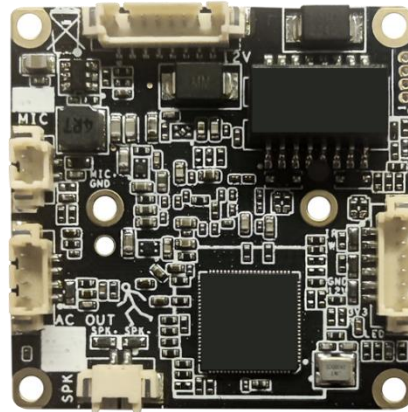
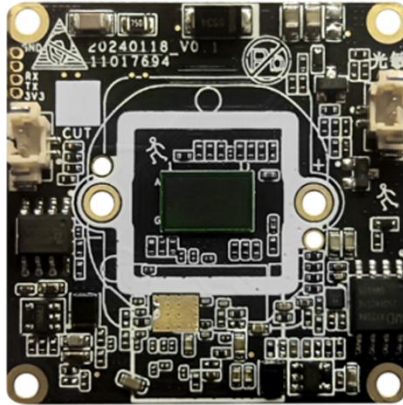


CKANPLUS Product Datasheet

Model name: *CAF-500R-DC*



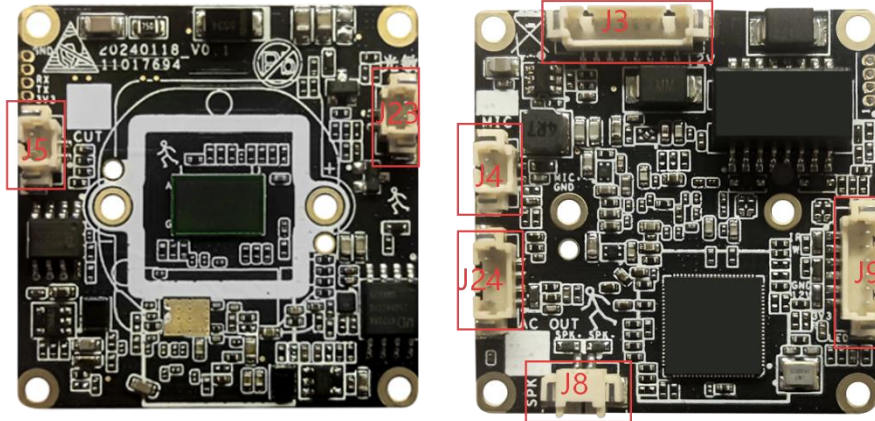
Key Specifications:

Category	Item	Specification
System	System Processor	Embedded Linux architecture, A7 1GHz processor, 0.5T computing power
	Image Sensor (Option)	1/1.8" Low illuminance CMOS sensor
Image	Streams	Dual stream
	Main Stream Frame Rate & Resolution	25fps: 2880*1620 (default), 2560*1440, 2304*1296, 1920*1080
	Sub Stream Frame Rate & Resolution	25fps: 720*576, 720*480, 704*576 (default), 640*360, 640*480, 512*288, 352*288
	Effective Pixels	5 Megapixels
	Video Compression Standard	H.265 (default)/H.264
	Main Stream:	Main stream: 256~8192Kbps; Default: 3072Kbps
	Sub Stream:	Sub stream: 68~1024Kbps; Default: 682Kbps
	Wide Dynamic Range	Digital WDR
	Sync Mode	Internal synchronization
	Signal-to-Noise Ratio	47.8dB

	Minimum Illumination	0.0002Lux
Supplementary Light	Light Adjustment	Adaptive brightness adjustment
	Light Modes	Infrared, Warm light, Smart dual-light (default), Light off
Image Processing	Image Style	Standard, Soft, Transparent
	Day/Night Mode Switching	Auto switch, Timed switch, Day mode, Night mode
	Image Adjustment	Supports contrast, brightness, saturation, sharpness adjustment
	Exposure Settings	Automatic
	Image Enhancement	Digital 3D noise reduction, Defog
Audio	Audio Stream	Enabled by default; supports disable
	Encoding Format	G711A (default)/G711U
Network	Concurrent Streams	Client supports up to 16 streams
	Browser Support	IE8+, Chrome18+, Firefox5.0+, Safari5.02+; Supports English and Chinese
	API Protocols	Standard ONVIF, GB28181, Public Cloud
	Network Protocols	Standard HTTP, TCP/IP, ICMP, RTSP, RTP, UDP, RTCP, SMTP, DHCP, DNS
	Connection Method	Wired
Interfaces	Audio	1 built-in MIC, 1 built-in speaker
	Network	1 RJ45 10M/100M adaptive Ethernet port
	Storage	SD card not supported
Intelligence	Smart Events	Supports motion detection (human shape), region intrusion, tripwire detection, defocus detection, video tampering
General	User Management	Up to 12 users, 3-level permissions: Admin, Normal user, Visitor
	General Functions	Time config, OSD config, Privacy masking, Log management, Tamper alarm, Defocus detection
	Alarm Linkage	Email alert, Client alarm, Mobile app push
	Factory Reset	Browser reset, App reset

	Operating Temperature/Humidity	-20°C to +60°C; 10% to 90%
	Power Supply	DC12V
	Board Size	38*38 mm

Pin Definition



Label	Silkscreen No.	Pin No.	Pin Definition	Function
Power & Network	J3	1	LINK	Network Link Indicator
		2	RECOVERY	Reset / Factory Restore
		3	TNTX+	Network 1 (Transmit +)
		4	TNTX-	Network 2 (Transmit -)
		5	TNRX+	Network 3 (Receive +)
		6	TNRX-	Network 6 (Receive -)
		7	GND	Ground
		8	12VIN	12V Power Input
LED Board	J9	1	LED_IR	IR LED Control
		2	LED_W	White Light Control
		3	GND	Ground
		4	12V	12V Power Supply
		5	3V3	3.3V Power Supply
		6	LED_RED	Status Indicator LED
Audio I/O	J24	1	AC_OUT	Audio Output
		2	GND	Ground
		3	AC_IN	Audio Input
		4	GND	Ground
Microphone	J4	1	GND	Ground
		2	MIC+	Microphone Positive

Speaker	J8	1	SPK-	Speaker Negative
		2	SPK+	Speaker Positive
IR-CUT	J5	1	BOUT	IR-CUT Drive B
		2	AOUT	IR-CUT Drive A
Photosensitive	J23	1	GND	Ground
		2	CDS+	Photosensitive Sensor